

## Mounting Assemblies

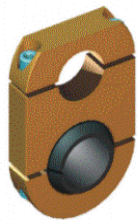
### Features & Benefits

- Machined to close tolerance for maximum clamping force on standard bases, tooling arms, tooling links and grippers.
- Adapts most commercially available grippers to Series 100 and Series 125 finger tooling components.
- Available with or without spherical steel ball.
- Independent adjustability in two axis.
- Metric fasteners.
- Anodized finish for appearance and durability.

### FLEX 125 Mounting Assemblies

Part Number	Component
S.125.AA.038	End Tooling Swivel Mounting Assembly
S.125.AA.037	Gripper Mounting Assembly - Spherical Type for BTM
S.125.AA.128	Gripper Mounting Assembly - 90° Type for BTM

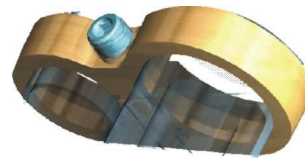
*Note: This product is only available in the 125 Series.*



Part #S.125.AA.038



Part #S.125.AA.037



Part #S.125.AA.128

If you are purchasing any of our Mounting Assemblies, you might also want to look at:

- *Edge Sensing Assemblies*
- *Tooling Links*

These additional components can be found online in our Tooling section at [www.atlastechnologies.com](http://www.atlastechnologies.com).