

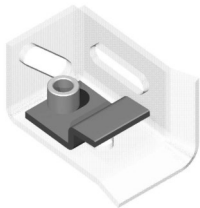
Shovel Stops and Traps

Features & Benefits

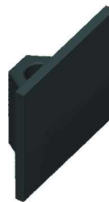
- Large family of stamped steel standard shovel stops and shovel traps.
- Shovel stops and traps are designed to fit the part contour by utilizing the integrated slots in the box and spade shovels for mounting and adjustment.
- Shovel stops and traps have integrated nuts to simplify adjustment.
- Shovel stops and traps are black oxide coated to prevent rust.
- Versatile scissor shovel may be used as a one piece shovel and trap combination or rotated 90 degrees for a side guide and trap.

Shovel Stops and Traps

Part Number	Component
S.125.AA.146	Shovel Trap
S.125.AC.131	Shovel Stop - 38 mm (1.5 in.)
S.125.AA.147	Scissor Shovel



Part#S.125.AA.146



Part#S.125.AC.131



Part#S.125.AA.147

If you are purchasing our Crossbars, you might also want to look at:

- *Tooling Arms*
- *Shovels*

Additional components can be found online in our Tooling section at www.atlastechnologies.com.