

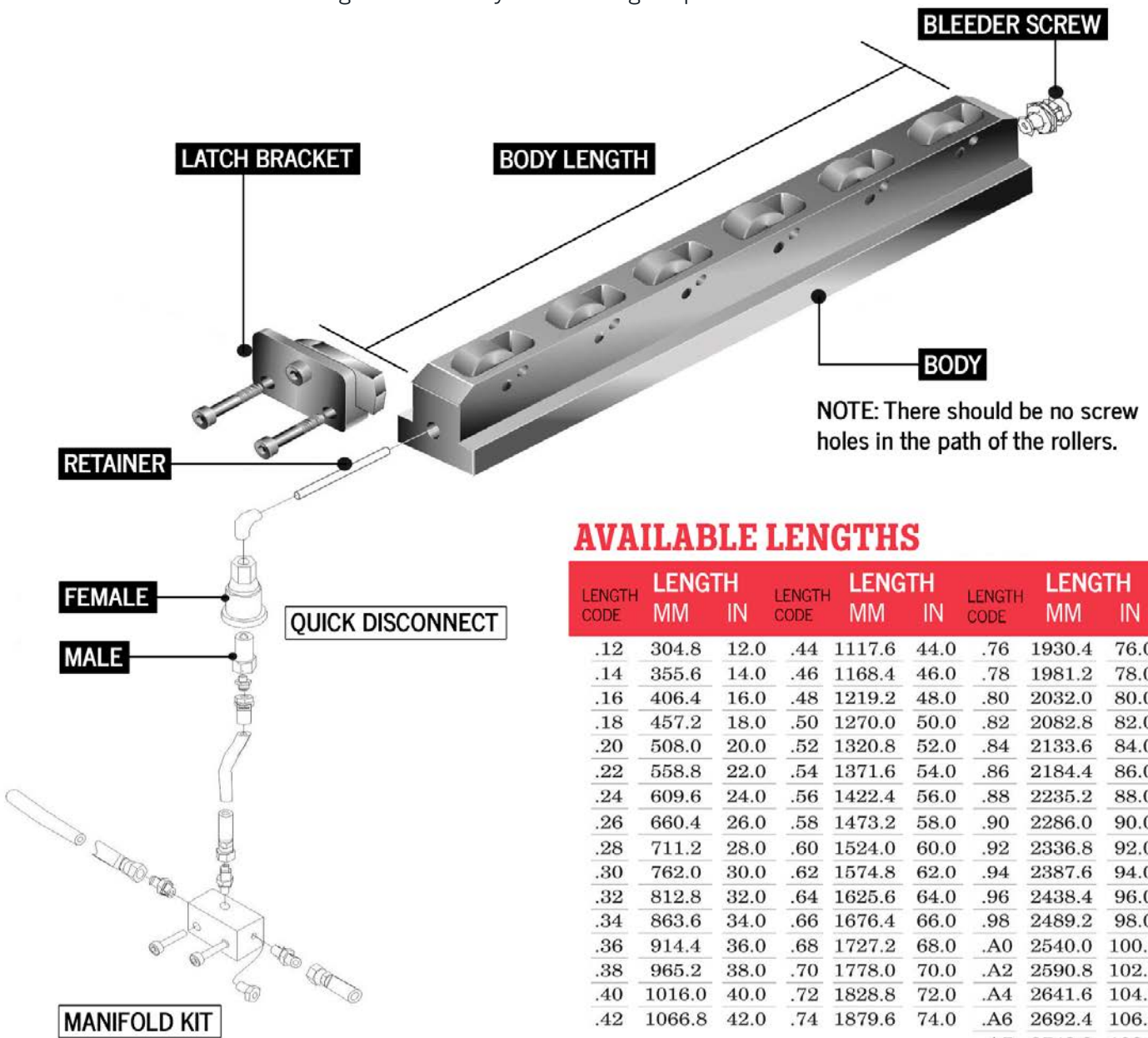


**INQUIRIES?**  
 PHONE 1.810.629.6663  
 FAX 1. 810.629.8145  
 WEB ATLASTECHNOLOGIES.COM  
 EMAIL SALES@ATLASTECHNOLOGIES.COM

PRODUCT DETAILS

# LIF-T-ROL Die Lifter

Atlas Technologies' LIFT-T-ROLS are designed to fit into existing Bolster T-slots, raising the die/ subplate off the Bolster during die change. This allows for a smooth rolling surface for the tool, eliminating any shock or possible contact of the die steels during operation. Atlas' LIF-T-ROLS have a lifting capacity of 2,000 lbs/ft and are mounted into a one piece machined frame. Our accessories are offered in various lengths to meet all your Die Change requirements.

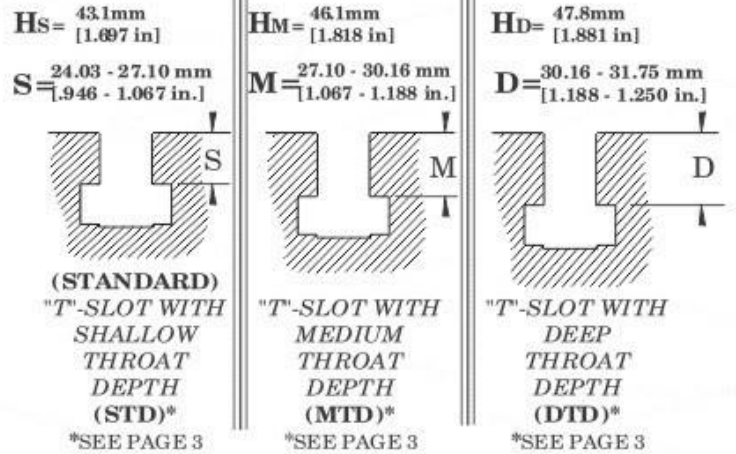
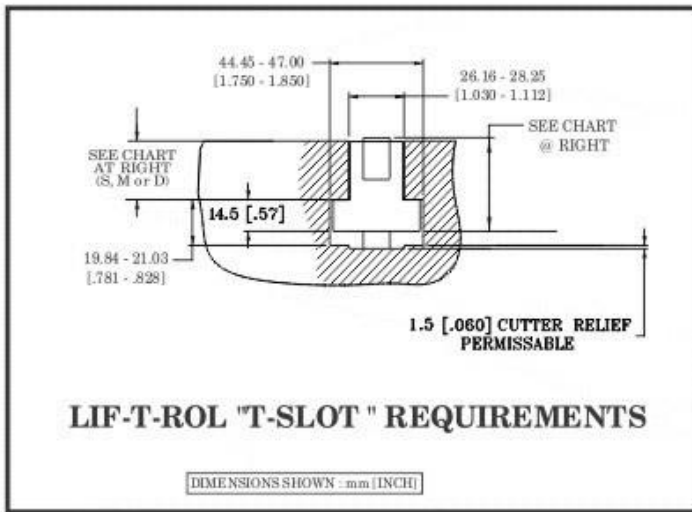
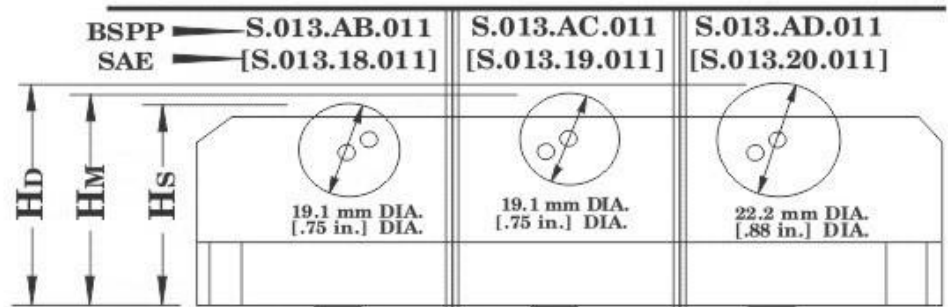
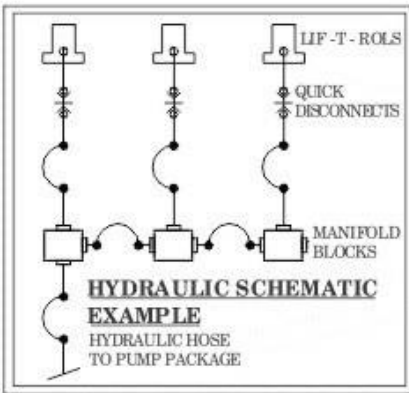


## AVAILABLE LENGTHS

LENGTH CODE	LENGTH		LENGTH CODE	LENGTH		LENGTH CODE	LENGTH	
	MM	IN		MM	IN		MM	IN
.12	304.8	12.0	.44	1117.6	44.0	.76	1930.4	76.0
.14	355.6	14.0	.46	1168.4	46.0	.78	1981.2	78.0
.16	406.4	16.0	.48	1219.2	48.0	.80	2032.0	80.0
.18	457.2	18.0	.50	1270.0	50.0	.82	2082.8	82.0
.20	508.0	20.0	.52	1320.8	52.0	.84	2133.6	84.0
.22	558.8	22.0	.54	1371.6	54.0	.86	2184.4	86.0
.24	609.6	24.0	.56	1422.4	56.0	.88	2235.2	88.0
.26	660.4	26.0	.58	1473.2	58.0	.90	2286.0	90.0
.28	711.2	28.0	.60	1524.0	60.0	.92	2336.8	92.0
.30	762.0	30.0	.62	1574.8	62.0	.94	2387.6	94.0
.32	812.8	32.0	.64	1625.6	64.0	.96	2438.4	96.0
.34	863.6	34.0	.66	1676.4	66.0	.98	2489.2	98.0
.36	914.4	36.0	.68	1727.2	68.0	.A0	2540.0	100.0
.38	965.2	38.0	.70	1778.0	70.0	.A2	2590.8	102.0
.40	1016.0	40.0	.72	1828.8	72.0	.A4	2641.6	104.0
.42	1066.8	42.0	.74	1879.6	74.0	.A6	2692.4	106.0
						.A7	2743.2	108.0

### FEATURES

- + Provides a lifting force of 29,167 N/M [2,000 lbs./ft.] of body length. (2,974 Kg/M ~Ref.)
- + Will raise die 1.5 mm [.06 in.] (min.) to 4.57 mm [.18 in.] (max.) depending on throat dimension
- + Mounts in T-slot
- + Accepts dies from front or rear sides
- + Minimal amount of fittings
- + Available in both BSPP and SAE ports
- + Designed to fit most standard 28.0 mm [1.06 in.] T-slots
- + Lif-T-Rols are available in lengths from 304.8 mm [12.00 in.] thru 2743.2 mm [108.00 in.] in 50.8 mm [even 2 inch] increments
- + Latch mounts right or left of slot
- + Comes complete as shown



Atlas also offers MAX-ROL, Ledge Clamp and Air-Lifter Assemblies. Please contact us at 810-629-6663 and speak with a Components Representative, or visit us at [www.atlastechnologies.com](http://www.atlastechnologies.com).