



INQUIRIES?

PHONE 1.810.629.6663 | FAX 1. 810.629.8145
 WEB ATLASTECHOLOGIES.COM
 EMAIL SALES@ATLASTECHOLOGIES.COM
 ADDRESS 3100 COPPER AVE, FENTON, MI 48430

PRODUCT DETAILS

Mounting Assemblies

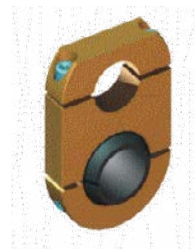
Features & Benefits

- Machined to close tolerance for maximum clamping force on standard bases, tooling arms, tooling links and grippers.
- Adapts most commercially available grippers to Series 100 and Series 125 finger tooling components.
- Available with or without spherical steel ball.
- Independent adjustability in two axis.
- Metric fasteners.
- Anodized finish for appearance and durability.

Flex 125 Mounting Assemblies

Part Number	Component
S.125.AA.038	End Tooling Swivel Mounting Assembly
S.125.AA.037	Gripper Mounting Assembly - Spherical Type for BTM
S.125.AA.128	Gripper Mounting Assembly - 90° Type for BTM

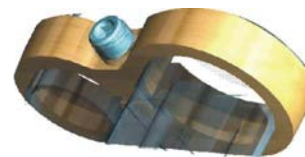
Note: This product is only available in the 125 Series.



Part #S.125.AA.038



Part #S.125.AA.037



Part #S.125.AA.128

ADDITIONAL TOOLING COMPONENTS INCLUDE:

Adapters, Adapter Brushings, Cross Bars, Edge Sensing Assemblies, Internal Wedges, Mounting Assemblies, Offsets, Shovels, Shovels & Traps, Standard Tooling Bases, Swivel Clamp Assemblies, Tooling Arms, Tooling Links, Universal Tooling Receivers