



**INQUIRIES?**

PHONE 1.810.629.6663 | FAX 1. 810.629.8145  
 WEB ATLASTECHNOLOGIES.COM  
 EMAIL SALES@ATLASTECHNOLOGIES.COM  
 ADDRESS 3100 COPPER AVE, FENTON, MI 48430

**PRODUCT DETAILS**

**In-Line & 90° Offset Arms**

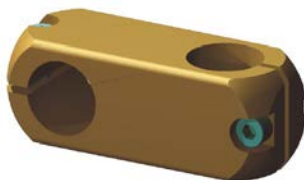
Features & Benefits

The In-line Offset Arm and the 90° Offset Arm provide a cost effective solution for simple 90° transitions or in-line offsets without the expense or added flexibility of our patented Swivel Clamp Assemblies.

- Solid one piece machined aluminum for structural integrity.
- Machined to close tolerance for maximum clamping force on standard bases, tooling arms and tooling links.
- Ideal for a simple 90 degree offset or an in-line offset of standard bases to tooling arms or tooling arm to tooling arm transitions.
- Independent adjustability in two axis.
- Metric fasteners.
- Anodized finish for appearance and durability.

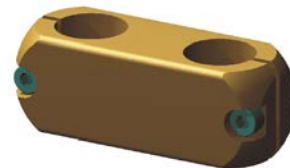
Flex 100 Offset Arms

Part Number	Component
S.100.AA.171	Offset Arm 90°
S.100.AA.172	Offset Arm In-line



Flex 125 Offset Arms

Part Number	Component
S.125.AA.171	Offset Arm 90°
S.125.AA.172	Offset Arm In-line



**ADDITIONAL TOOLING COMPONENTS INCLUDE:**

Adapters, Adapter Brushings, Cross Bars, Edge Sensing Assemblies, Internal Wedges, Mounting Assemblies, Offsets, Shovels, Shovels & Traps, Standard Tooling Bases, Swivel Clamp Assemblies, Tooling Arms, Tooling Links, Universal Tooling Receivers