

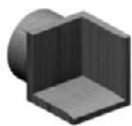


**INQUIRIES?**  
PHONE 1.810.629.6663 | FAX 1. 810.629.8145  
WEB ATLASTECHNOLOGIES.COM  
EMAIL SALES@ATLASTECHNOLOGIES.COM  
ADDRESS 3100 COPPER AVE, FENTON, MI 48430

**PRODUCT DETAILS**  
**Shovels**

Features & Benefits

- Large family of stamped steel standard box shovels, spade shovels, shovel stops and shovel traps.
- Box and spade shovels have integrated slots for mounting and adjustment of shovel to cross-bars or tooling arms.
- Box and spade shovels have integrated slots for mounting and adjustment of shovel stops and traps to fit the part contour.
- Integrated shovel mounting slots are designed to fit over the key on the wedge clamp assembly to prevent rotation of the shovels mounted to tooling arms.
- All shovels are designed to accept the use of Edge Sensing Assemblies for part present detection.
- Shovels are black oxide coated to prevent rust.
- Versatile scissor shovel may be used as a one piece shovel and trap combination or rotated 90 degrees for a side guide and trap.
- Custom Shovels are available upon request.



Part # S.125.AA.120



Part # S.125.AB.141



Part # S.125.AB.142

Part Number	Component
S.125.AA.120	Cast Box Shovel
S.125.AA.141	Stamped Box Shovel - 38 mm (1.5 in.)
S.125.AB.142	Spade Shovel
S.125.AA.130	Stamped Box Shovel - 51 mm (2 in.)
S.125.AB.143	Sheet Metal Shovel - 51 mm (2 in.)
S.125.AA.147	Scissor Shovel



Part #S.125.AA.130



Part # S.125.AB.143



Part # S.125.AA.147

**ADDITIONAL TOOLING COMPONENTS INCLUDE:**

Adapters, Adapter Brushings, Cross Bars, Edge Sensing Assemblies, Internal Wedges, Mounting Assemblies, Offsets, Shovels, Shovels & Traps, Standard Tooling Bases, Swivel Clamp Assemblies, Tooling Arms, Tooling Links, Universal Tooling Receivers